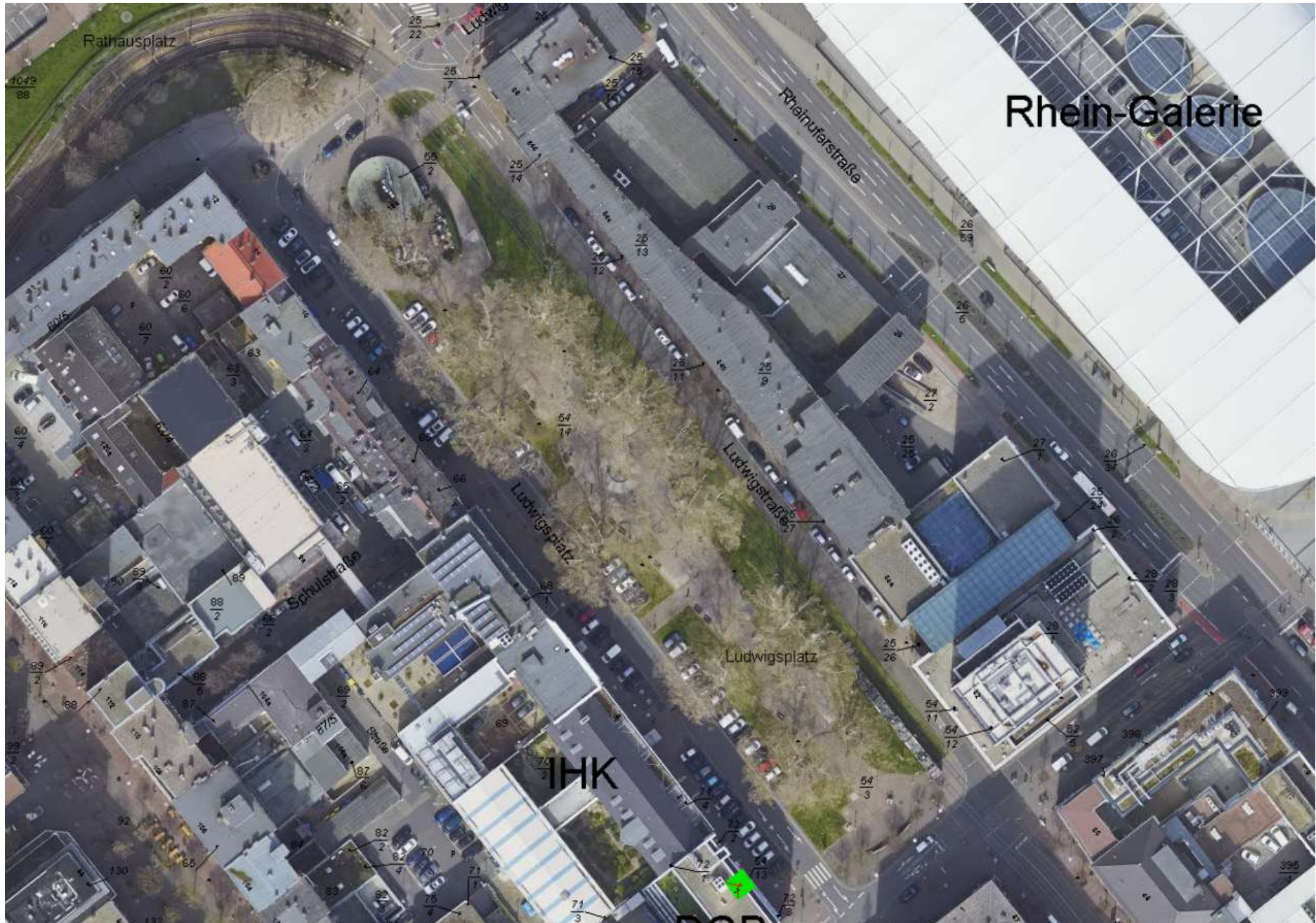




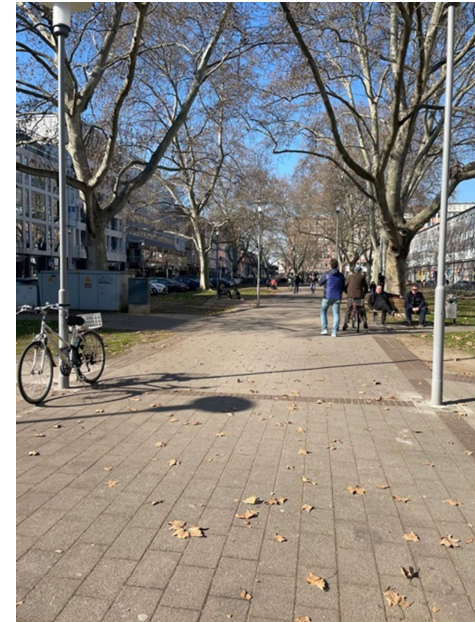
Attraktivierung des Ludwigsplatzes

Neues Bepflanzungskonzept und
Ergänzung der bestehenden
Beregnungsanlage.

Luftbild



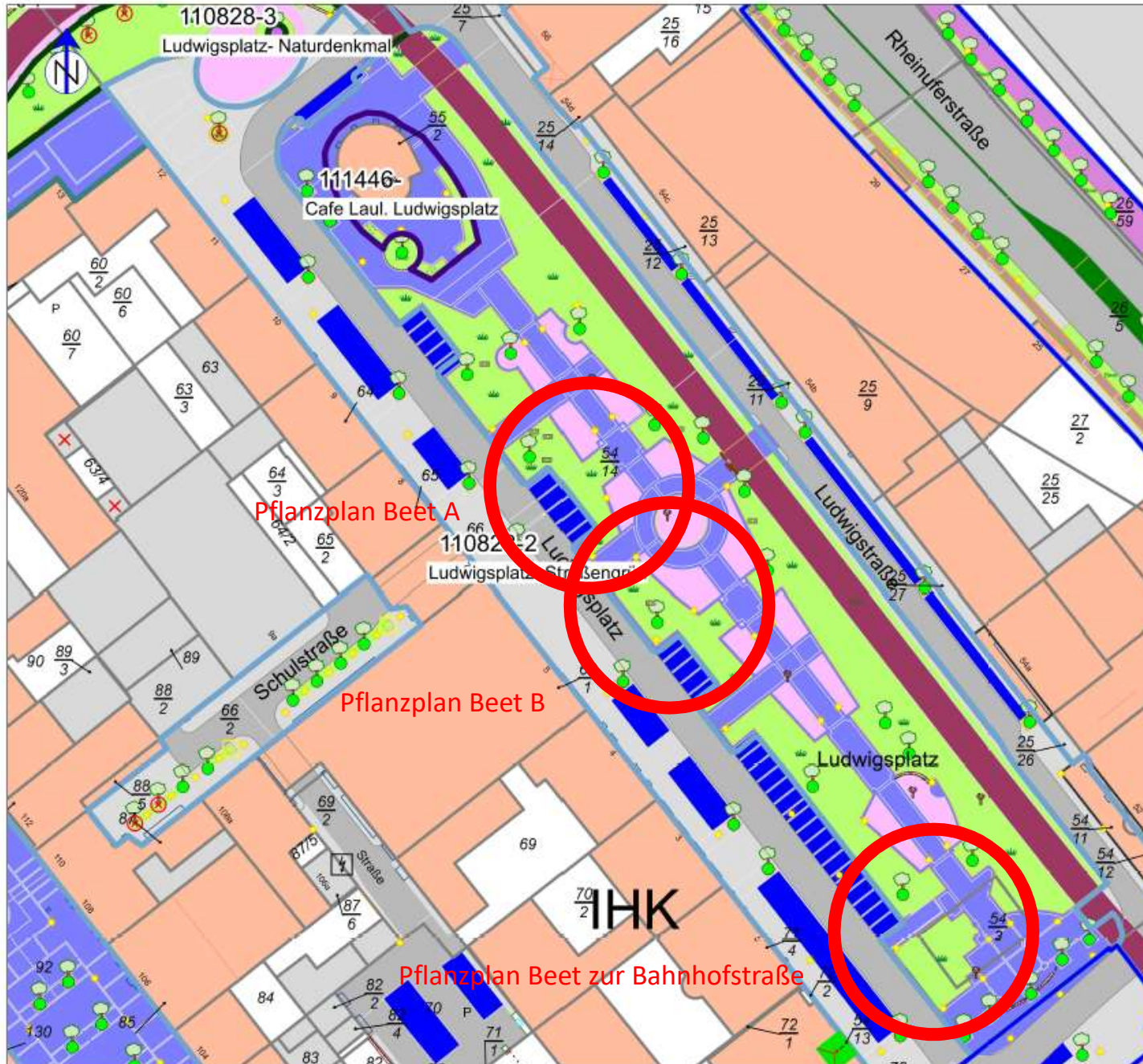
Eindrücke 1



Eindrücke 2

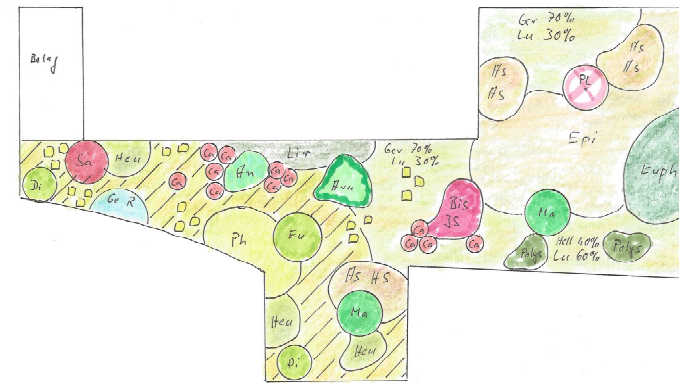
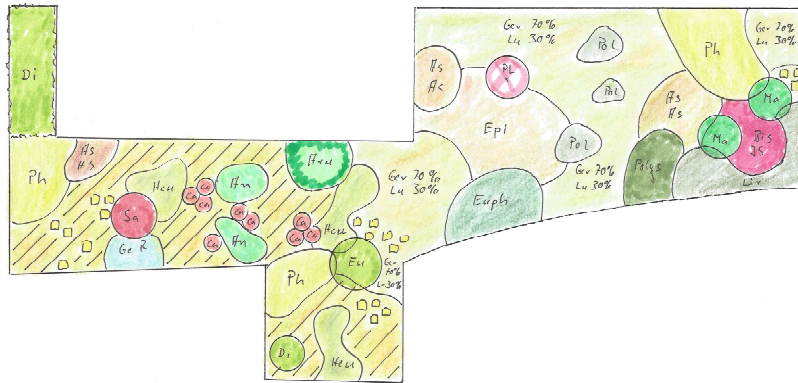


Übersichtsplan



Pflanzplan Beet A und B

Pflanzplanung Ludwigsplatz



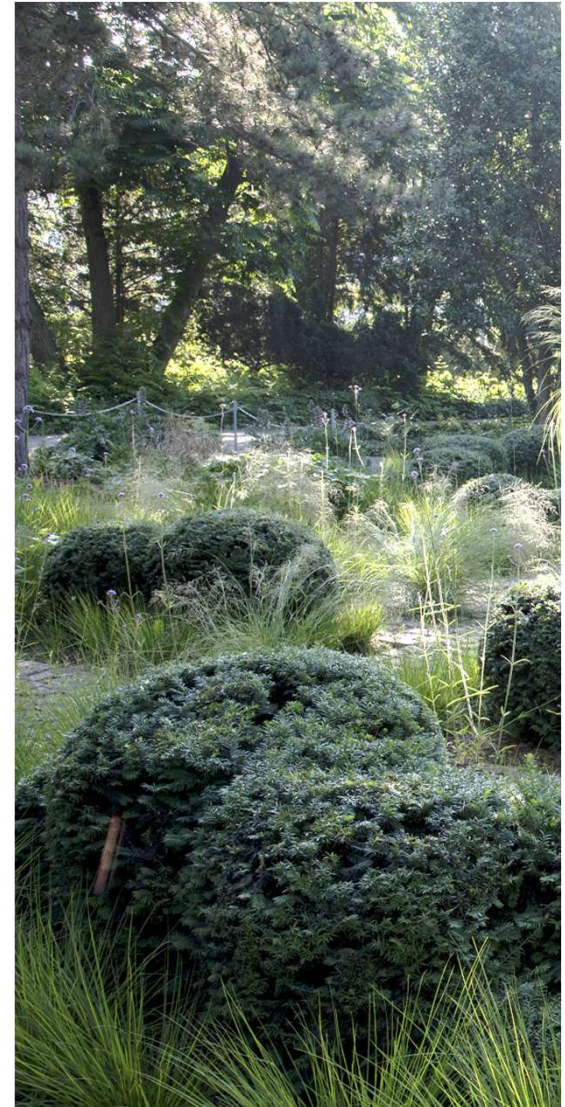
Pflanzliste:

- PL = Platane - Bestand -
- Sa = Sambucus 'Black Lace'
- Di = Dracopis splendens 'Kodiak Orange'
- Eu = Eucragmus alatus 'Compactus'
- Ma = Mahonia medea 'Winter Sun'
- = Hemerocallis 'Queen Flutter'
- Hcu = Heuchera villosa var. macrorrhiza
- Ge R = Geranium 'Rozanne'
- Ge = Geranium mac. 'Lentor' 50%
+ mac. 'Spissart' 50%
- Ca = Calamagrostis 'Lushan'
- Liv = Liviope muscavi 'Sagwerson'
- Hcu = Heuchera 'Havalia'
- Ph = Phloxes russeliana

- Hs Hs = Aster ageratoides 'Haugy Schmidt'
- Hs Hs = Aster ageratoides 'Hsian'
- Bis JS = Bistorta arapl. 'JS Caliente'
- Lu = Luzula micra
- Epi = Epimedium pav. 'Fuchsteifent'
- Euph = Euphorbia amygdaloides vobstae
- Hm = Hemerocallis 'Whirlwind'
- Pals = Polystichum aculeatum
- Pol = Polygonatum x hyb. 'Weihenstephan'
- Hcu = Heuchera oxycalyx Hyb. - weiss-
- /// = Matrix aus 75% Seselia autumnalis
+ 20% Aster divaricatus + 5% Nassella ten.

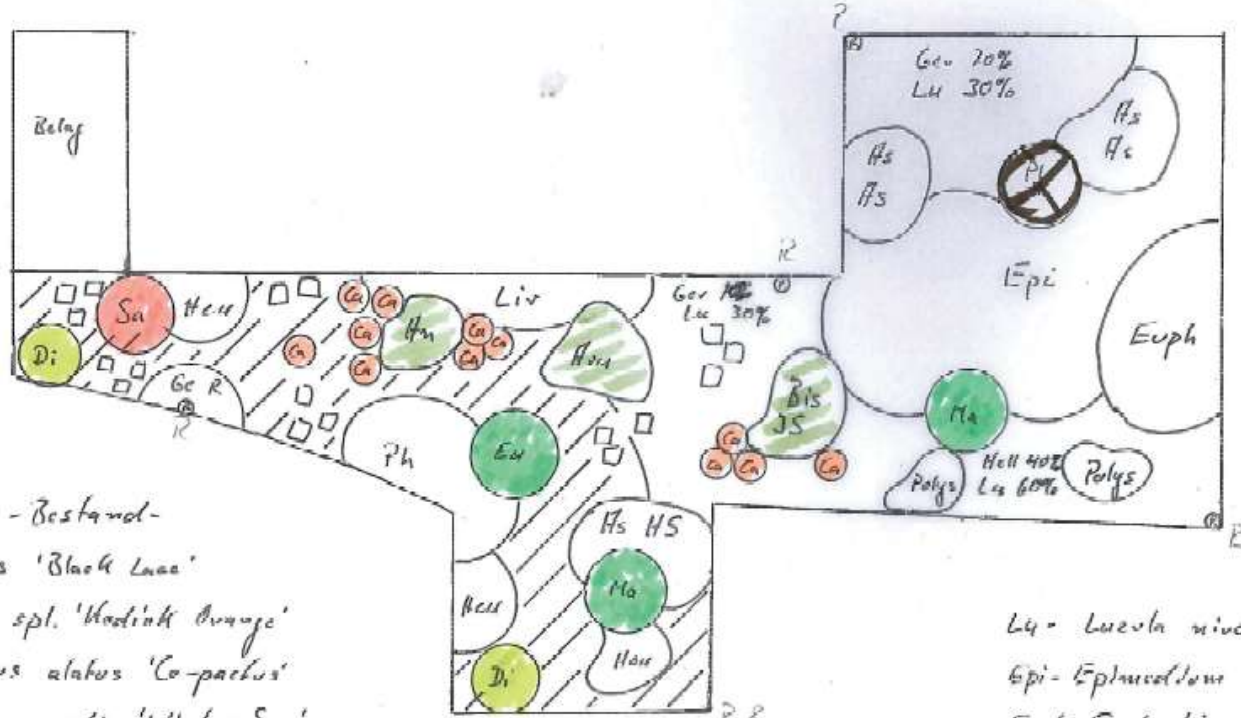
M 11.100
Nov. '20 V. G.

Pflanzungsschema



Pflanzplan Beet A

Ludwigsplatz - Beet A -



Pflanzliste:

Pl - Platane - Bestand-

Sa = Sambucus 'Black Lace'

Di = Diervilla spl. 'Heldik Orange'

Eu = Eranthis alata 'Co-pactus'

Ma = Malva media 'Winter Sun'

□ = Hemerocallis 'Green Flutter'

Heu = Heuchera villosa var. mac.

Ger R = Geranium 'Rozanne'

Ger = Geranium mac. 'Cezanne' 50%

+ mac. 'Spessart' 50%

Ca = Calluna vulgaris 'Lushan'

/// = Matris aus 75% Sestaria auf.

+ 20% Hebe div. + 5% Nassella

Liv = Livipane mus. 'Ingwersen'

Hua = Anemone 'Horatio'

Ph = Phlox russeliana'

Hs HS = Aster ager. 'Harry Schmidt'

Hs Hs = Aster ager. 'Hs van'

Bis JS = Bischof amp. 'JS Calicut'

Lu = Luzula nivea

Epi = Eupatorium 'Frohlicke'

Euph = Euphorbia amy. nobisae

Polys = Polystichum aculeatum

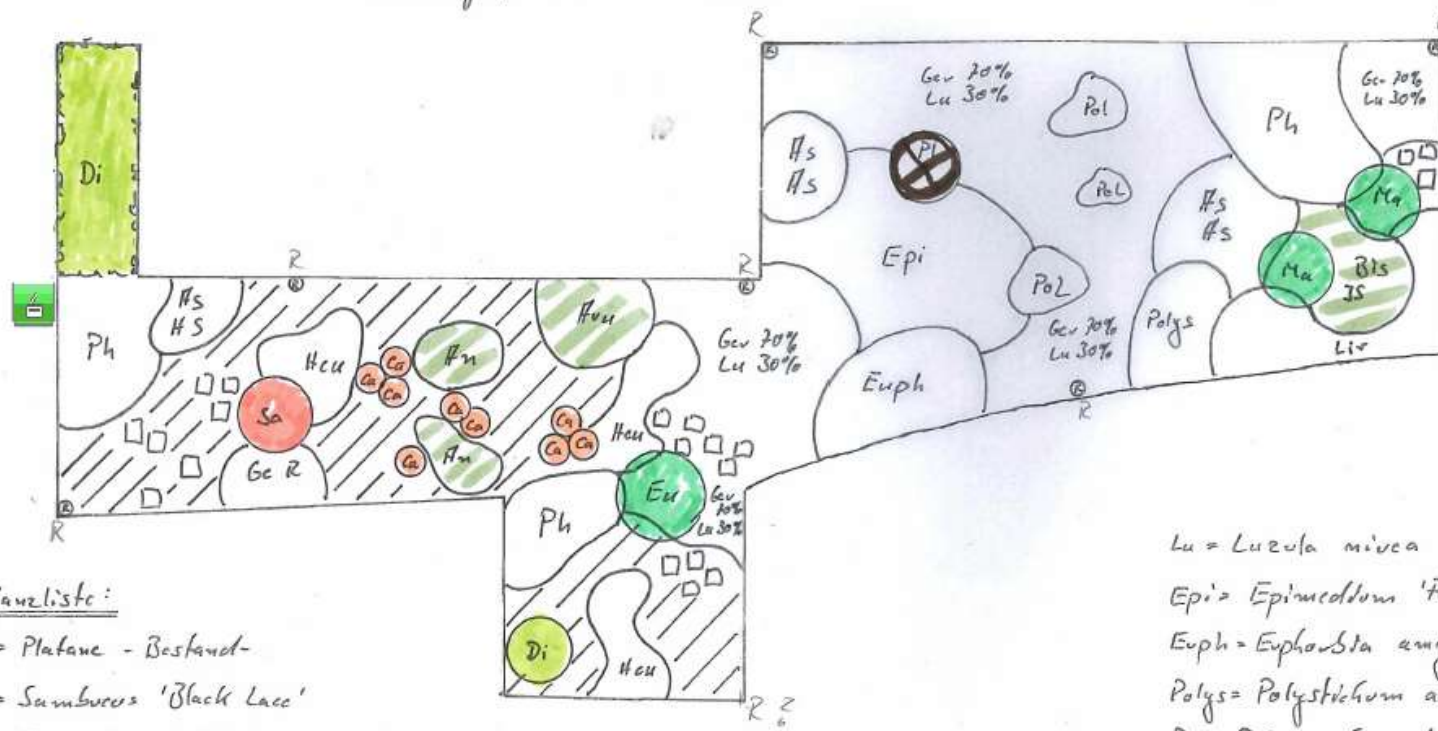
Hs = Anemone 'Whirlwind'

Helle Helleboms var. Hyb. - weiss-

<p>M 21.100</p> <p>Nov. '20</p>

Pflanzplan Beet B

Ludwigsplatz - Beet B -



Pflanzenliste:

- PI = Platane - Bestand
- Sa = Sambucus 'Black Lace'
- Di = Diervilla spl. 'Kodak Orange'
- Eu = Evonymus alatus
- Ma = Mahonia media 'Winter Sun'
- = Hemerocallis 'Guerri Flutten'
- Hcu = Heuchera villosa var. mac.
- Ge R = Gevadium 'Rozanne'
- Ge = Gevadium mac. 'Cezka' 50%
+ mac. 'Spessart' 50%

- Ca = Calamagrostis 'Lushan'
- Liv = Liviope mus. 'Jugensen'
- Hcu = Hieracium 'Horatio'
- Ph = Phloxes russeliana
- Hs Hs = Aster ager. 'Harry Schmidt'
- Hs Hs = Aster ager. 'Hs van'
- Bis JS = Bistorta amp. 'JS Caliente'

Lu = Luzula nivea

Epi = Epimedium 'Folklore'

Euph = Euphorbia amy. robbiae

Polys = Polystichum aculeatum

Pol = Polygonatum x byb. 'Vierknostrophu'

An = Anemone 'Whirlwind'

// = Matule aus 75% Sestera autumnalis
+ 20% Aster div. + 5% Nassella

M 11.100
Nov '20 V.S.

Pflanzplan Beet zur Bahnhofstraße

Ludwigsplatz - Beet zur Bahnhofstraße -

Pflanzliste:

- Vi = *Vitex agnus-castus*
- Pe = *Perovskia* alba 'Filigram'
- Stg: = *Stipa gigantea*
- = *Panicum virgatum* 'Heavy Metal'
- △ = *Festuca maritima*
- Ph = *Phlomis russeliana*
- AmS BJ = *Amsonia* 'Blue Ice'
- Co FM = *Careopsis* 'Full Moon'
- HS So = *Heteranemum* 'Sonora'
- Li = *Limonium latifolium*
- Ec tc = *Echinacea tenn.* 'Rocky Top Hyb.'
- Ge TM = *Geranium* 'Tiny Monster'
- Ge D = *Geranium* 'Dilys'
- Ne = *Nepeta faass.* 'Walker's Low'
- = *Hemerocallis* 'Crimson Pirate'
- △ = *Sedum tel.* 'Herbstfreude'
- /// = *Festuca autumnalis* 85% + *Nassella* 5%
+ *Origanum lac.* 'Rosens Kuppel' 10%
- Seu = *Scutellaria incana*





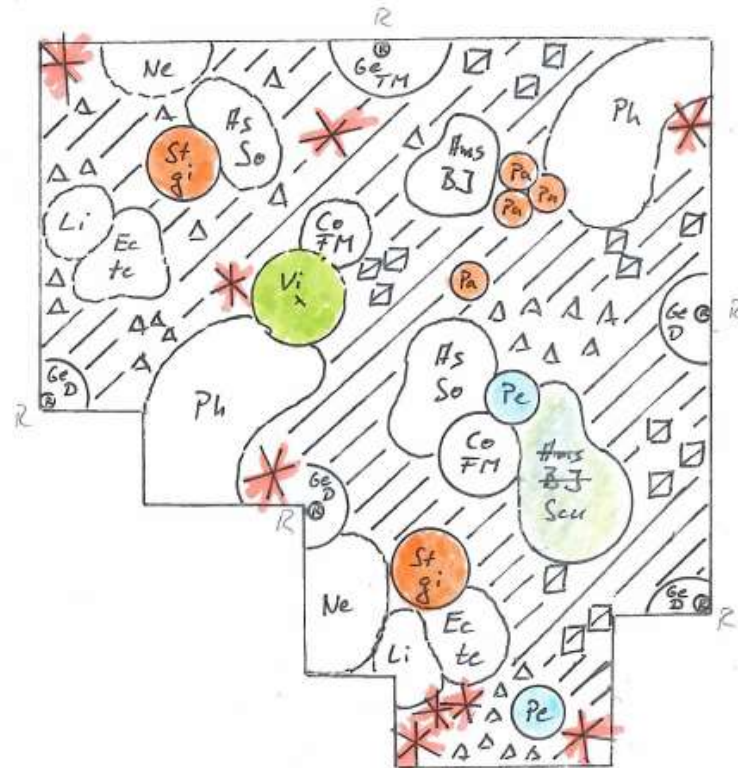
M 1100
Nov. 20 U.Sa

Pflanzplan Beet zur Bahnhofstraße

Ludwigsplatz - Beet zur Bahnhofstraße -

Pflanzliste:

- Vi = *Vitex agnus-castus*
- Pe = *Perovskia atr. 'Filigram'*
- Stgi = *Stipa gigantea*
-  = *Panicum viv. 'Heavy Metal'*
- * = *Festuca maitei*
- Ph = *Phlomis russeliana*
- Hms BJ = *Hemanta 'Blue Ice'*
- Co FM = *Cosopsis 'Full Moon'*
- Hs So = *Aster amellus 'Sonora'*
- Li = *Limonium latifolium*
- Ec te = *Echinacea tern. 'Rocky Top Hyb.'*
- Ge TM = *Geonium 'Tiny Monster'*
- Ge D = *Geonium 'Ditys'*
- Ne = *Nepeta faass. 'Walkers Low'*
-  = *Hemerocallis 'Crimson Pirate'*
- Δ = *Sedum tel. 'Herbstfreude'*
- // = *Sisyrinchia autumnalis* 85% + *Nissolia* 5%
+ *Origanum lacu. 'Rosenkuppel'* 10%
- Seu = *Scutellaria incana*



H 1100
Nov. '20 V.S.